



The Royal Australian
and New Zealand
College of Radiologists®

RANZCR CLINICAL RADIOLOGY TRAINING PROGRAM 2022 YEAR 3 2022

LEADERSHIP TEAM

Dr Meredith Thomas

CHIEF CENSOR

Dr Barry Soans

DEPUTY CHIEF CENSOR, CHAIR CREAC

Dr Jash Agraval

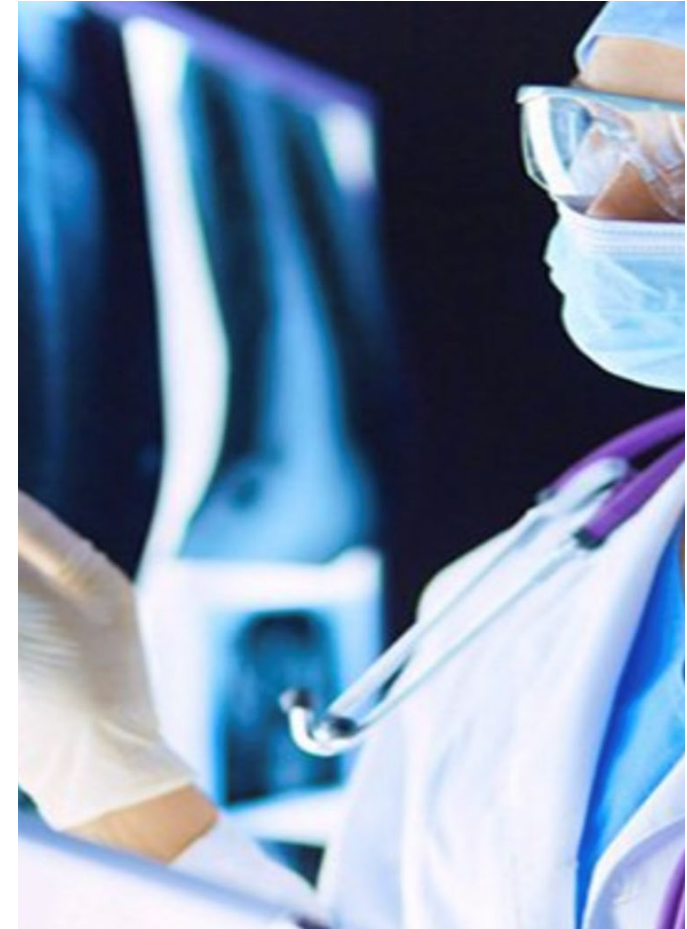
DEPUTY CHIEF CENSOR, CHAIR CRCAC

Dr Mike Bynevelt

CHIEF ACCREDITATION OFFICER, CHAIR CTRAWG

Dr Kwang Chin

CHAIR IMG COMMITTEE



WEBINARS

Date	Webinars	
July-August	Session 1:	Overview of the new training program, transition scenarios Sessions: DoTs, NTDs, trainees Individual trainee year groups Local Jurisdictions
September	Session 2:	Work-Based Assessments
October	Session 3:	e-Portfolio System
November	Session 4:	Examination changes
December	Session 5:	Progression

WEBINARS

Trainee webinars:

Current year 1- Aug 10

Current year 2- Aug 12

Current year 3- Aug 17

Current year 4-5- Aug 19

2022 new trainees- ? Oct

Webinar schedules and additional information including Q&As will be posted on to College website:

www.ranzcr.com/tar/webinars

TAR INFORMATION

ASM trainee day presentation Sat 18 September

Visit the TAR webpage at
www.ranzcr.com/tar

Webinars available:
www.ranzcr.com/tar/webinars

Email us at:
CRtraining@ranzcr.edu.au



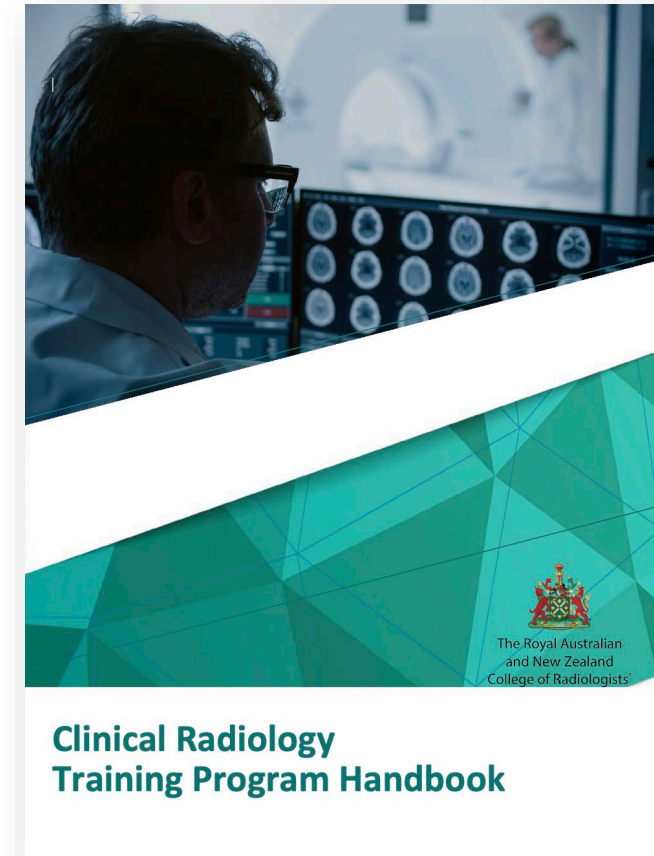
The Royal Australian
and New Zealand
College of Radiologists®

RECAP.....



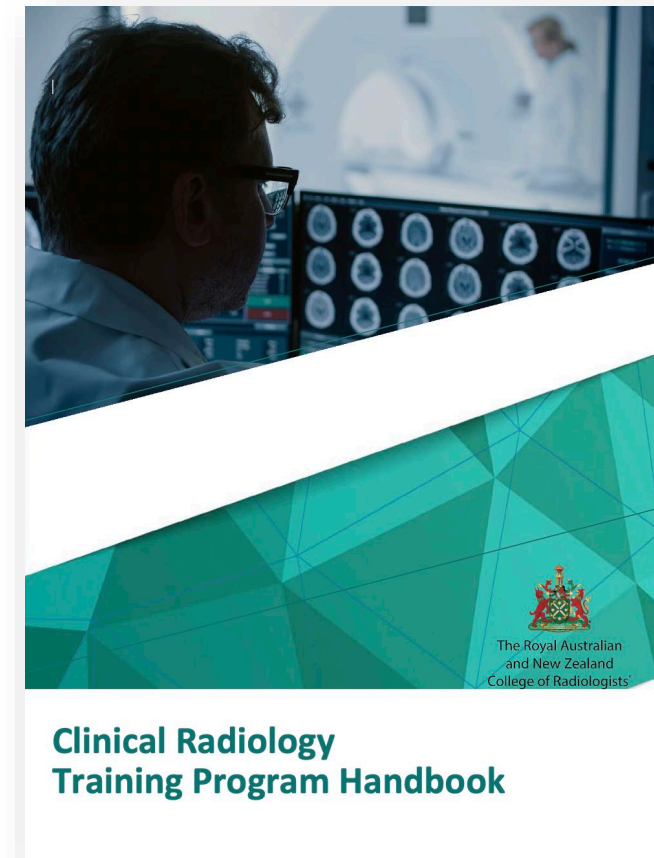
THE TRAINING PROGRAM HANDBOOK

- The draft Training Program Handbook for Clinical Radiology has been developed and is currently under review by College staff and various College committees and working groups.
- The handbook will serve as a comprehensive guide for trainees that will encompass every element of the new training program from assessment tools and instructions, to policies and guidelines
- The handbook will be the final product of the program and will be released once finalized.



THE TRAINING PROGRAM CURRICULUM

- Changing at implementation ie February 2022
- **2022 exams (Part 1 and Part 2) will be based on the new curriculum**
- Will be released shortly



THE NEW E-PORTFOLIO

The training program will be administered in the new **e-Portfolio** which will:

- Replace TIMS
- Manage trainee information and rotations
- Monitor trainee progression
- Host and manage WBAs
- Manage trainee examination eligibility
- As well as other training functions



OVERVIEW OF THE TRAINING PROGRAM

- * Designed as a 5-year program over 3 phases
- * Trainees progress between phases as competencies are achieved



PHASE 1 OVERVIEW

****times refers to training
time**

Time	Min 12 months Max 24 months
Learning outcomes	Intrinsic roles, anatomy, AIT
Learning experiences	Radiography attachment Report writing module Key conditions Progress towards ETRs
Work based assessments	Key conditions assessment 20 reporting sessions per 6 months 50 US performed Progress towards fluoroscopy, procedures, meetings
Research	CATs x 2 RP proposal
Monitoring and review	DoT assessment every 6 months MSF x 1
Examinations	Anatomy AIT
Progression	Portfolio review by LGC

PHASE 2 OVERVIEW

Time	Min 48 months (Phase 1 and 2) Max 60 months (Phase 1 and 2)
Learning Outcomes	Intrinsic roles, AI, pathology, CR, PR
Learning experiences	System attachments Progress towards ETRs
Work based assessments	20 reporting sessions per 6 months Progress towards performed paed and O&G ultrasounds, fluoroscopy, procedures, meetings
Research	CATs x 2 Research project progress including oral presentation
Monitoring and review	DoT assessment every 6 months MSF x 2
Examinations	Written examinations-path and CR OSCER (must complete writtens before presenting)
Progression	Portfolio review by LGC

PHASE 3 OVERVIEW

Time	12 months in Phase 3
Learning Outcomes	Intrinsic roles, pathology, CR, PR
Learning experiences	4 x 3 month subspecialty rotations No more than 6 months in broad subspecialty area (eg IR) Completion of ETRs
Work based assessments	20 reporting sessions per 6 months Completion of performed paed and O&G US, fluoroscopy, procedures, meetings
Research	CATs x 2 Complete research project, including oral presentation if not previously performed
Monitoring and review	DoT assessment every 6 months MSF x 1
Examinations	-
Progression	Portfolio review by LGC, recommendation to CC

KEY CHANGES TO THE LEARNING OUTCOMES

Key changes

- **More streamlined and consistent, in terms of format, terminology and subheadings**
 - Body Systems Syllabus now referred to as Diagnostic Radiology
 - General learning outcomes consolidated; specific learning outcomes created for topic areas
- **Categorisation and condition list are amended significantly**
 - Categories under Anatomy and AIT have been removed
 - Anatomical variants lists have been simplified
 - Categories 1, 2 and 3 are re-defined for Pathology and Diagnostic Radiology
 - Condition lists have been updated
- **Procedural Radiology**
 - Incorporates core skills recommended by Interventional Radiology Committee
 - Divided into procedures to be performed, and procedures to know about
- **More emphasis on Intrinsic Roles including cultural competence**
- **Research learning outcomes expanded**
- **Artificial Intelligence added**

LEARNING EXPERIENCES AND WORK- BASED ASSESSMENT CHANGES

Current Program	New Training Program
<ul style="list-style-type: none">• Structured Learning Experiences<ul style="list-style-type: none">• Report writing, patient safety modules• Experiential Training Requirements• Systems Focused Rotations• Work-Based Assessments<ul style="list-style-type: none">• Key Conditions• Ultrasound Logbook• Angiographic and Interventional Logbook• Direct Observation of Procedural Skills• Mini-Individual Patient Exercise• Research<ul style="list-style-type: none">• 4 Critically Appraisal Topics (CAT)• Project 1 and Project 2• Review/Feedback Tools<ul style="list-style-type: none">• Director of Training Review• Multi-Source Feedback	<ul style="list-style-type: none">• Competencies of Early Training<ul style="list-style-type: none">• Report writing, patient safety, incident reporting• Key Conditions Assessment• Structured Learning Experiences<ul style="list-style-type: none">• Attachments• Experiential Training Requirements – updated• Work-Based Assessments<ul style="list-style-type: none">• Reporting Assessment• Performed Ultrasound Assessment• Fluoroscopic Procedures Assessment• Procedural Radiology Assessment• Clinical Meeting/MDM Assessment• Research<ul style="list-style-type: none">• 6 CATS• ONE Research Project• Review/Feedback Tools<ul style="list-style-type: none">• Director of Training Review• Multi-Source Feedback

WORK BASED ASSESSMENTS

Work-Based Assessments include the following:

- **Reporting Assessment**
- **Performed Ultrasound Assessment**
- **Fluoroscopic Procedures Assessment**
- **Procedural Radiology Assessment**
- **Multidisciplinary/Clinical Radiology Meetings Assessment**

The onus is on trainees to initiate Work-Based Assessments with Clinical Supervisors.



ENTRUSTABILITY SCALE

The benchmark: Competent specialist capable of safe independent practice

LEVEL 1	LEVEL 2	LEVEL 3	LEVEL 4
Constant Direct Supervision	Direct Supervision	Minimal Direct Supervision	Direct Supervision not Required

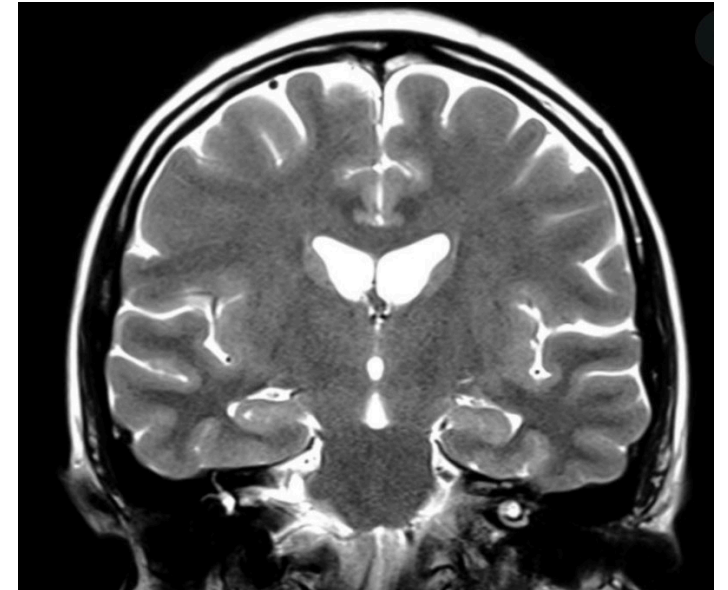
REPORTING ASSESSMENT

20 sessions per 6-month period (approx. 1 per week)

The Clinical Supervisor reviews the studies reported by a trainee in a “session” (4 hours).

The number of studies assessed in the session will be variable, depending on the seniority of the trainee, the modality and the complexity of studies.

Across the training program, the collated Reporting Assessments should include a wide variety of studies and a variety of assessors.



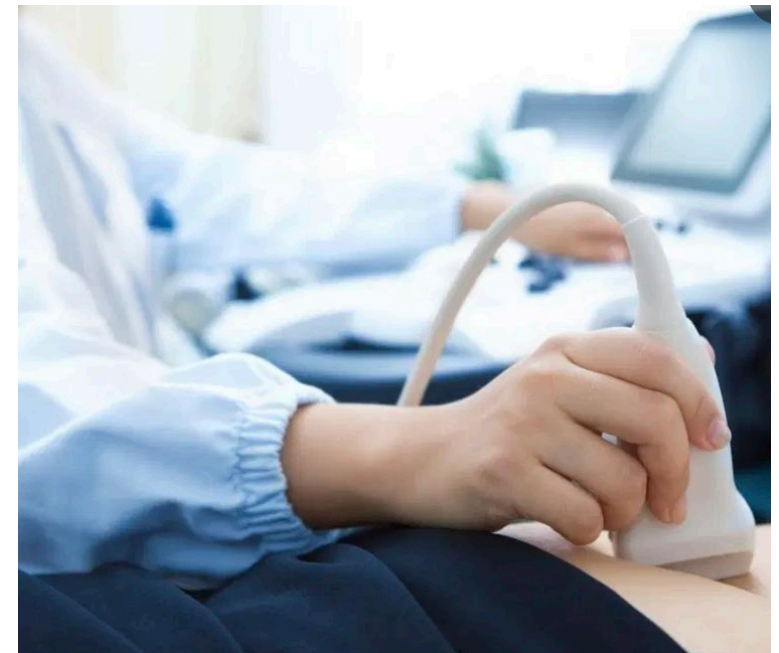
PERFORMED ULTRASOUND ASSESSMENT

Trainees are required to perform and record:

- **50 general ultrasound scans by the end of Phase 1 of training**
- **50 additional paediatric ultrasound scans, including 10 neonatal heads by the end of Phase 3 of training**
- **50 additional obstetric and gynaecological ultrasound scans by the end of Phase 3 of training**

The trainee requests the supervising sonographer or sonologist to consider their performance on each ultrasound.

The sonographer uses the entrustability scale to rate the trainee's performance according to how much supervision the trainee requires to perform the ultrasound.



FLUOROSCOPIC PRODECURES ASSESSMENT

Trainees are required to perform and record:

- **50 general fluoroscopic procedures by the end of Phase 3 of training**
- **20 additional paediatric fluoroscopic procedures by the end of Phase 3 of training**

The trainee requests the Clinical Supervisor consider their performance on each procedure.

The Clinical Supervisor uses the entrustability scale to rate the trainee's performance according to how much supervision the trainee requires to perform and report on the case.

In assigning a rating the Clinical Supervisor should consider both knowledge and skills-based competencies, as well as intrinsic roles.

PROCEDURAL RADIOLOGY ASSESSMENT

Trainees are required to perform and record 100 interventional procedures under radiological guidance across the three phases of training. At least 15 of each of the following core skills is required:

- **Injection**
- **Drainage**
- **Biopsy**
- **Vascular access**

The trainee requests the Clinical Supervisor consider their performance on each procedure.

The Clinical Supervisor uses the entrustability scale to rate the trainee's performance according to how much supervision the trainee requires to report on the case.

In assigning a rating the Clinical Supervisor should consider both knowledge and skills-based competencies, as well as intrinsic roles.





MULTIDISCIPLINARY/CLINICAL MEETINGS ASSESSMENT

Trainees are required to attend and participate in 100 meetings over the 3 phases of training, 50 of which must be MDMs with a pathologist present to meet progression requirements.

In clinical radiology meetings and MDMs, trainees are expected to present radiological findings and work collaboratively with other team members correlating clinical, radiological and pathological findings to optimise patient care.

An assessment can only be recorded if the trainee primarily assists in the preparation or presents at meetings.

RESEARCH REQUIREMENT

Critically Appraised Topics (CATs) - 6 in total, 2 in each phase

ONE Research Project

- Project plan / research proposal approval by end of Phase 1
- Research project to be completed by end of training, including:
 - 1a. evidence of acceptance for peer review in peer-reviewed journal of impact factor greater than 1.0, or
 - 1b. in the event that a manuscript is declined, submission of a research report of approx. 7000 words

AND

- 2. oral presentation at local Branch level for consideration for Branch of Origin



EXAM TIMING...FROM 2023

Summary of Examination Timetable to be implemented from 2023:

Phase 1 Examinations		
	Sitting 1	Sitting 2
Applications Open/Close	Jan/Feb	July/Aug
Examinations Held	April	October
Release of Results	End June	End Nov

Phase 2 Written Examinations		
	Sitting 1	Sitting 2
Applications Open/Close	Oct/Nov the year prior	April/May
Examinations Held	February	July
Release of Results	April	Sept

Phase 2 OSCER Examinations		
	Sitting 1	Sitting 2
Applications Open/Close (intention to sit)	Feb/March	July/August
Examinations Held	Early June	Early November
Release of Results	Late June	Late November

EXAMINATION CHANGES – PART 1

COMMENCE 2022

FORMAT

RULES

- Can sit the Anatomy and AIT Examination independently or together
- Up to 4 consecutive opportunities, irrespective of number of examinations sat at an opportunity.

	Current	Future
Anatomy	<ul style="list-style-type: none">• Two papers x 2 hours<ul style="list-style-type: none">○ Short Answer Questions	<ul style="list-style-type: none">• One paper x 3 hours<ul style="list-style-type: none">○ Labelling○ Multiple Choice Questions (MCQs)○ Very Short Answer Questions (VSAs)○ Short Answer Questions (SAQs)
Applied Imaging Technology (AIT)	<ul style="list-style-type: none">• Two papers x 2 hours<ul style="list-style-type: none">○ Written essay questions○ MCQs	<ul style="list-style-type: none">• One paper x 3 hours<ul style="list-style-type: none">○ Constructed Response Questions (CRQ)○ MCQs

ANATOMY EXAMINATION

One 3 hour paper (1 mark per minute):

- Labelling – 120 labels, $\frac{1}{4}$ mark each, across 6 body systems
- MCQs – 60 questions, 1 mark each
- VSAs – 30 questions, 1 mark each
- SAQs – 20 questions, 3 marks each

AIT EXAMINATION

One 3 hour paper to assess trainee knowledge on imaging technology, quality and safety:

- Constructed Response Questions – 9 questions worth 10 marks each
- MCQs – 60 questions worth 1 mark each

EXAMINATION FORMAT – PART 2 WRITTEN COMMENCES SERIES 1 2023

Pathology:

- o 3 hours (Changed from 2 hours to 3 hours)
- o Will incorporate SAQs in addition to MCQs to test depth of knowledge

Clinical Radiology:

Radiology MCQ

- o Unchanged, 2 hours, 100 MCQs

Case reporting

- o Changed from 2 hours to 3 hours
- o Will incorporate short, medium and long cases

EXAMINATION FORMAT – OSCER COMMENCES SERIES 1 2023

Objective Structured Clinical Examination Radiology (OSCER)

Standardised digital cases will be used to align with the contemporary practice and to reduce the variation in cases.

- o Standardised questions will be presented to ensure candidates have the same opportunity to display knowledge
- o Standardised marking templates with rubrics will be used

OSCER FORMAT

Run over half a day

7 stations with 2 examiners at each station

Breast, O&G split

Pathology incorporated, with capacity for applied anatomy and AIT questions

Number of cases at each station determined by topic area and modality

Same case set shown to all candidates in a day

Structured questions

OSCER – MARKING

Each case is marked in 2 ways:

- Scored out of 10 using a marking rubric
- A global rating is also given
- This enables standard setting for the Viva

Must pass all stations (nominal pass mark 50%)

- If fail 1 or 2 stations, repeat only those stations
- If fail > 2 stations- repeat all stations

Candidates who have failed 1-2 stations and are borderline in those stations will be reviewed by CREAC, taking into consideration WBAs and performance in other Examinations - may be granted a conceded pass.

PHASE 2 EXAMINATION RULES

Rules	Current	Future
Sitting	<p>All Examinations sat at the same time</p> <p>Can pass “piecemeal”</p>	<ul style="list-style-type: none"> • Pathology and Clinical Radiology Written Examinations can be sat independent of each other. • Written Examinations has two components, CR MCQ and Case Reporting, which must be sat together. • Written Examinations must be passed before presenting for the OSCER.
Number of attempts	<p>4 consecutive opportunities from commencement of sitting</p>	<p>Maximum of 6 consecutive sittings from when exams commenced (3 years) irrespective of FTE</p> <p>Maximum consecutive opportunities</p> <ul style="list-style-type: none"> • Pathology - 3 • Written Examinations – 3 • OSCERS - 3
Passing	<p>Must reach a passing standard in each Examination / Viva</p> <p>Can pass Vivas “piecemeal”</p>	<p>Written Examinations and OSCERS:</p> <ul style="list-style-type: none"> • For borderline candidates, WBAs and other Examinations will be considered when determining is a candidate has reached a passing standard (conceded pass). <p>OSCERS:</p> <ul style="list-style-type: none"> • If 1 or 2 stations failed, only repeat those stations that were failed • If 3 or more stations failed, repeat the whole OSCER.

TRANSITION



The Royal Australian
and New Zealand
College of Radiologists®

HOW TO TRANSITION

- A new **e-Portfolio system** will replace TIMS in late 2021
- There will be a cut-off date for TIMS
- All trainees' progress will be moved from TIMS to the new e-Portfolio
- Training time completed and progress achieved under current program will be recognised
- All trainees will receive a transcript of their progress, which outlines what has been completed under the current program.
- **All trainees should meet with their DoT to document training activities completed but not documented on TIMS, prior to the cut-off date.**



TRANSITION-ETRs, LEARNING EXPERIENCES, WBAs

- Trainees should use the time prior to TIMS shutdown to ensure all are up to date
- At transition:
 - **ETRs and WBAs must be up to date or will not be recognised**
 - Trainees will receive a transcript outlining those they have completed on TIMS.
 - Completed will be recognised in the new e-Portfolio system.
- DoTs will have capacity to “sign off” on learning experiences, ETRs and WBA completed at transition but not documented on TIMS, eg
 - CTs and other studies, meeting presentation
- If prior ETRs have not been documented, new ETRs will be “pro-rated” from implementation, according to the year of training.

TRANSITION - RESEARCH REQUIREMENTS

All transitioning trainees must complete old research project requirements:

- will be required to complete Project 1
- can have Project 2 signed off with old criteria

New trainees from February 2022 - new research project requirements:

- are not required to complete Project 1
- must have the new research project signed off with new criteria

TRANSITION- PHASE 3 CONSOLIDATION YEAR

New trainees from February 2022-

- after successful completion of Phase 2 Examinations, must complete four three-month subspecialty rotations.

Transitioning trainees who have not completed Phase 2 Examinations-

- will be able to sit them in their 5th year of training, and will not be required to compete 12 months in Phase 3.

Transitioning trainees post-completion of Phase 2 Examinations-

- will move to Phase 3 in their 5th year of training and must either do system focused rotations, or subspecialty rotations (site-dependent).

Phase 3 learning activities

- Undertake reporting and perform procedures in a subspecialty areas
- Participate in relevant administrative duties, clinical and multidisciplinary meetings and/or other training activities
- Maintain general skills and knowledge by participating in after hours and on call activities on an equitable basis

PHASE 1 EXAMINATION TRANSITION

- For transitioning trainees, **opportunities prior to implementation count.**
- Transitioning trainees who have failed one or two components of the current Anatomy Examination must sit the new Anatomy Examination.
- Transitioning trainees who have failed one or two components of the current AIT Examination must sit the new AIT Examination.
- All trainees transitioning into Phase 1 automatically granted a 6-month extension of training time and a 5th consecutive opportunity in the event of failure to pass after 4 opportunities.

PHASE 2 EXAMINATION TRANSITION

- **All trainees who have completed ≥ 24 months training in Feb 2022 (i.e., transitioning into 3rd, 4th or 5th year) sit with the old rules, irrespective of format.**
- **All trainees who have completed < 24 months training Feb 2022 (i.e., transitioning into 1st or 2nd year) sit with the new rules, and cannot commence sitting until Series 1 2023, new format.**

TRANSITION SCENARIOS



The Royal Australian
and New Zealand
College of Radiologists®

SCENARIO 2 – TRAINEES TRANSITIONING INTO 2ND YEAR IN 2022

Trainees Who Have	Enter	Progression
Not passed all components of the Part 1 Examination	Phase 1	<ul style="list-style-type: none">• New Phase 1 Examination format and rules• Automatically granted a 6-month extension of training time and a 5th opportunity at the Phase 1 Examinations in the event of failure to pass after 4 opportunities• Cannot commence sitting Phase 2 Examinations until Series 1 2023• New Phase 2 Examination format and rules• 12 months in Phase 3 not mandatory, i.e., can still sit Phase 2 Examinations in 5th year
Complete all components of the Part 1 Examination	Phase 2	<ul style="list-style-type: none">• Cannot commence sitting Phase 2 Examinations until Series 1 2023• New Phase 2 Examination format and rules• Automatically granted a 6-month extension of training time and a 5th opportunity at the Phase 1 Examinations in the event of failure to pass after 3 opportunities• 12 months in Phase 3 not mandatory, i.e., can still sit Phase 2 Examinations in 5th year

SCENARIO 2 – TRAINEES TRANSITIONING INTO 2ND YEAR IN 2022 (NEW RULES PHASE 1 AND PHASE 2 EXAMINATIONS)

Suggested transition scenario:

- 2022** - Complete Phase 1 Examinations in new format
- 2023** - Commence new Phase 2 Written Examinations
- 2024** - Complete Phase 2 Written Examinations, and sit OSCER
- 2025** - Complete new OSCER

SCENARIO 3 – TRAINEES TRANSITIONING INTO 3RD YEAR IN 2022

Trainees who have	Enter	Progression
Passed Part 1 Examinations	Phase 2	<p>Commence sitting Phase 2 Examinations in 2023</p> <ul style="list-style-type: none">• New Examination format and delivery from Series 1 2023• All old rules• Automatically granted a 6-month extension of training time and an additional consecutive Examination opportunity in the event of failure to pass after 4 opportunities <p>12 months in Phase 3 not mandatory.</p>

SCENARIO 3 – TRAINEES TRANSITIONING INTO 3RD YEAR IN 2022 (OLD RULES PHASE 2 EXAMINATIONS)

Suggest transition scenario:

2022 - No Examinations

2023 - Phase 2 Examinations, old rules, i.e., sit all at the same time, can pass Viva stations piecemeal

2024 - Complete Examinations

WHAT NEEDS TO BE DONE

- Trainees to complete assessments and learning experiences in timely manner as per current training requirements.
- Trainees to keep all information and records up-to-date in TIMS, to ensure data being transferred to the e-Portfolio is as accurate as possible.
- Trainees to meet with DoT to determine and document all completed ETRs and training experiences.
- To read information regarding the transition provided through College communication channels and keep abreast of change.



WANT TO FIND OUT MORE? ASK YOUR QUESTIONS HERE

Scan the QR Code below to submit your questions relating to the 2022 Training Programs, CPD or general College information.



FOR MORE INFORMATION

Please visit the College website at www.ranzcr.com



The Royal Australian
and New Zealand
College of Radiologists®

FOR MORE INFORMATION

ASM trainee day presentation Sat 18 September

Visit the TAR webpage at

www.ranzcr.com/tar

Webinar schedule available:

www.ranzcr.com/tar/webinars

Email us at:

CRtraining@ranzcr.edu.au



The Royal Australian
and New Zealand
College of Radiologists®